

# ALARD

S • Y • N • E • R • G • Y



ALARD CHARITABLE TRUST

Admissions Open for 2022-23:

**Alard Charitable Trust's**

**Alard College of Engineering  
and Management**

DTE Choice Dode: 6325

**KOTLER AWARD 2020:  
Best Engineering College**

## About the Trust:

Alard Charitable Trust is an educational trust registered under Bombay Charitable Trust Act 1960 bearing Registration No. E-2964-Pune dated 3rd Nov 1999. The trust is established for promoting the educational activities & programs as well as to create job opportunities for rural masses.

## About the College:

Alard College of Engineering and Management, Marunji, Pune is established in 2009. The college is affiliated to Savitribai Phule Pune University, approved by AICTE New Delhi and is recognized by DTE Government of Maharashtra. The college has been imparting quality technical education to the inspiring students and emphasizes on 'excellence in technical education'. All efforts are focused on providing knowledge to the students as per industry standards. It is located at IT Hub conducive for teaching, learning and research. ACEM has achieved several milestones in the field of technical, management, education and research and has been a much sought after destination for students, academicians as well as industries. The high standard of education imparted in the institute in the fields of technical education, Management and Computer Applications has proved to be the life line of many successful careers. Highly qualified, experienced and dedicated faculty is strength of the institute.

**ACT's Alard College of Engineering and Management, Marunji, Pune 411057.**

Approved by AICTE, New Delhi, Affiliated to the Savitribai Phule Pune University and Recognized by DTE-Maharashtra.

**NAAC Accredited**

**Civil Engineering**

**Electronics and Telecommunication Engineering**

**Computer Engineering**

**AIML Engineering**

**Electrical Engineering**

**Mechanical Engineering**

DTE Choice Code: 6325

For Admission Contact:

9822437729,

9168656066

[www.alardinstitutes.com](http://www.alardinstitutes.com)



## About Savitribai Phule Pune University

Pune is the main educational center of Maharashtra. Numerous student from every corner of India and the world come to Pune. It is quite safe and peaceful city as compared to other educational centers in India. The climate of Pune is pleasant and good for health. The city of Pune house many well-known, established institutes and colleges. Savitribai Phule Pune University is one of the finest and most popular educational centers in the city. It offers excellent programs in various areas including Science, Commerce, Arts, Languages and Management Studies.

Savitribai Phule Pune University, one of the premier universities in India, is positioned in the North-western part of Pune city. It occupies in area of about 411 acres. It was established on 10th February, 1949 under the Poona University Act. The University houses 46 academic departments. It is popularly known as Oxford of East. It has about 307 recognized research institutes and 612 affiliated college offering graduate and under-graduate. The University attracts many foreign students due to its excellent facilities

**ACT's Alard College of Engineering and Management, Marunji, Pune 411057.**

Approved by AICTE, New Delhi, Affiliated to the Savitribai Phule Pune University and Recognized by DTE-Maharashtra.

**NAAC Accredited**

**Civil Engineering  
Electronics and Telecommunication Engineering**

**Computer Engineering  
AIML Engineering**

**Electrical Engineering  
Mechanical Engineering**

DTE Choice Code: 6325

For Admission Contact:

9822437729,

9168656066

[www.alardinstitutes.com](http://www.alardinstitutes.com)





## From the desk of Chairman

From being a part of agriculture family in a small village of Aghaw district Deoria (U.P) has never affected my dreams of becoming a successful entrepreneur. My vision was always cleared of contributing a huge in the field of education and academics. After my schooling education, I shifted to Pune for higher education and then joined hands in my family business which was since 1968 and expanded the ALARD Group.

It was 1988, when I laid the foundation of ALARD Industries Ltd. and set up the manufacturing unit for machinery for sugar, cement and power plants. Impressively, the company has executed a lot of prestigious projects in Sugar Industries, Chemical Industries, Power Generation Plants, etc.

The zest of building a better nation lifted me to establish reputed educational Institutes in Pune which is focused on professional and higher education in engineering, Management, Pharmacy, Law, Medical Education and Schools.

Being The Founder Chairman and Managing Trustee of ALARD, it's my responsibility to provide the best education to my students. ALARD has achieved a lot yet we need to continue to take a bigger leap.

**“ No MATTER HOW MUCH WE **ACHIEVE, NEVER RELAX!**  
BECAUSE SOMETHING **EXCITING** IS ALWAYS WAITING TO **HAPPEN.**”**

**ACT's Alard College of Engineering and Management, Marunji, Pune 411057.**

Approved by AICTE, New Delhi, Affiliated to the Savitribai Phule Pune University and Recognized by DTE-Maharashtra.

**NAAC Accredited**

**Civil Engineering**

**Electronics and Telecommunication Engineering**

**Computer Engineering**

**AIML Engineering**

**Electrical Engineering**

**Mechanical Engineering**

DTE Choice Code: 6325

For Admission Contact:

9822437729,

9168656066

[www.alardinstitutes.com](http://www.alardinstitutes.com)



### **From the desk of Principal:**

It gives me a great pleasure to welcome you to "Alard College of Engineering and Management". The college has been imparting quality technical education to the inspiring students and emphasizes on 'excellence in technical education'. The college provides all the necessary state-of-art infrastructure, excellent academic and socio-technical facilities to the students and also conducts several social, cultural, co curricular and extracurricular activities throughout the year along with the completion of university academic curriculum.

Our teaching faculty is well qualified, dedicated, sincere, hard working, co-operative and they make use of modern and innovative teaching methods for making teaching-learning process more simple, effective, interesting, Innovative and result oriented. Thus our students will certainly become more knowledgeable, self confident and practical.

Education is a combine responsibility of academia, industry, professional associations and society. In order to face the future global challenges the capacity of engineering education shall be enhanced qualitatively. The postgraduate programmers' in Engineering & Science shall play a pivotal role in transforming technical education towards the very best.

**ACT's Alard College of Engineering and Management, Marunji, Pune 411057.**

Approved by AICTE, New Delhi, Affiliated to the Savitribai Phule Pune University and Recognized by DTE-Maharashtra.

**NAAC Accredited**

**Civil Engineering  
Electronics and Telecommunication Engineering**

**Computer Engineering  
AIML Engineering**

**Electrical Engineering  
Mechanical Engineering**

DTE Choice Code: 6325

For Admission Contact:

9822437729,

9168656066

[www.alardinstitutes.com](http://www.alardinstitutes.com)



## Vision

To develop a technical capability through quality technical education providing value aided programs and technical excellence to serve the society.

## Mission

- To be renowned as institute of national repute.
- Shaping nations economy by providing technocrats and entrepreneurs.
- Imparting outcome and skill based Technical education.
- Enhancing abilities of common masses by developing research attitude, values and skills required for engineering excellence thus contributing in nation building.

**ACT's Alard College of Engineering and Management, Marunji, Pune 411057.**

Approved by AICTE, New Delhi, Affiliated to the Savitribai Phule Pune University and Recognized by DTE-Maharashtra.

**NAAC Accredited**

**Civil Engineering**

**Electronics and Telecommunication Engineering**

**Computer Engineering**

**AIML Engineering**

**Electrical Engineering**

**Mechanical Engineering**

DTE Choice Code: 6325

For Admission Contact:

9822437729,

9168656066

[www.alardinstitutes.com](http://www.alardinstitutes.com)







## Scholarships Available:

All scholarships provided by Central and State government are available with us:

Directorate of Technical Education	Dr Punjabrao Deshmukh Vastigruh Nirvah Bhatta Yojna(DTE)
	Rajarshi Chhatrapati Shahu Maharaj Shikshan Shulkh Shishyavrutti Yojna(EBC)
	Scholarship for students of minority communities pursuing Higher and Professional courses(DTE)
OBC, SEBC, VJNT & SBC Welfare Department	
Social Justice and Special Assistance Department	
Tribal Development Department	

## Note:

All kind of assistance is provided for education loan.

**ACT's Alard College of Engineering and Management, Marunji, Pune 411057.**

Approved by AICTE, New Delhi, Affiliated to the Savitribai Phule Pune University and Recognized by DTE-Maharashtra.

**NAAC Accredited**

**Civil Engineering**

**Electronics and Telecommunication Engineering**

**Computer Engineering**

**AIML Engineering**

**Electrical Engineering**

**Mechanical Engineering**

DTE Choice Code: 6325

For Admission Contact:

9822437729,

9168656066

[www.alardinstitutes.com](http://www.alardinstitutes.com)





## Eligibility:

### **Bachelor of Engineering (B.E.) For First Year Admission:**

1. The Candidate should be an Indian National.
  2. **Passed HSC or its equivalent examination with Physics and Mathematics as compulsory subjects** along with one of the Chemistry or Biotechnology or Biology or Technical Vocational subject or Computer Science or Information Technology or Informatics Practices or Agriculture or Engineering Graphics or Business Studies and **obtained at least 45 % marks (at least 40 % marks, in case of Backward Class categories, Economically Weaker Section and Persons with Disability category candidates belonging to Maharashtra State)**, in the above subjects taken together; and the Candidate should have appeared in all the subjects in CET/JEE and should obtain non zero score in CET/JEE conducted by the Competent Authority.
- OR**
2. Passed Diploma in Engineering and Technology and obtained at least 45 % marks (at least 40 % marks, in case of Backward Class categories, Economically Weaker Section and Persons with Disability category candidates belonging to Maharashtra State)

**ACT's Alard College of Engineering and Management, Marunji, Pune 411057.**

Approved by AICTE, New Delhi, Affiliated to the Savitribai Phule Pune University and Recognized by DTE-Maharashtra.

**NAAC Accredited**

**Civil Engineering**

**Electronics and Telecommunication Engineering**

**Computer Engineering**

**AIML Engineering**

**Electrical Engineering**

**Mechanical Engineering**

DTE Choice Code: 6325

For Admission Contact:

9822437729,

9168656066

[www.alardinstitutes.com](http://www.alardinstitutes.com)



## Eligibility:

### **Bachelor of Engineering (B.E.) For Direct Second Year (Lateral Entry) Admission :**

1. The Candidate should be an Indian National
2. Passed **Diploma Course in Engineering** and Technology with **at least 45% marks (40% marks** in case of candidates of Backward Class categories, Economically Weaker Section and Persons with Disability category **belonging to Maharashtra State)** in appropriate branch of Engineering and Technology from an All India Council for Technical Education or Central or State Government approved Institution or its equivalent;  
OR
2. Passed **Passed B.Sc. Degree** from a University Grants Commission (UGC) or Association of Indian Universities recognized University with **at least 45% marks (40% in case of candidates of Backward Class categories, Economically Weaker Section and Persons with Disability category belonging to Maharashtra State )** and passed HSC or its equivalent examination with Mathematics as a subject.

**ACT's Alard College of Engineering and Management, Marunji, Pune 411057.**

Approved by AICTE, New Delhi, Affiliated to the Savitribai Phule Pune University and Recognized by DTE-Maharashtra.

**NAAC Accredited**

**Civil Engineering**

**Electronics and Telecommunication Engineering**

**Computer Engineering**

**AIML Engineering**

**Electrical Engineering**

**Mechanical Engineering**

DTE Choice Code: 6325

For Admission Contact:

9822437729,

9168656066

[www.alardinstitutes.com](http://www.alardinstitutes.com)



## Documents Required:

### Bachelor of Engineering (B.E.) For Admission :

1. SSC (Std.X) mark sheet.
2. HSC/Diploma/B. Sc. mark sheet.
3. MHT-CET/JEE (Main) Score Card.
4. School Leaving Certificate, if required to substantiate claim.
5. For Second Year Engineering and Technology: Equivalence Certificate from Maharashtra State Board of Technical Education, Mumbai [www.msbtte.com] for student having passed diploma from Other Board] (excluding Govt. Autonomous Institutes in Maharashtra and Dr. B.A.T.U. Lonere ) The Candidate should be an Indian National.
6. Certificate of the Indian Nationality of the candidate.
7. Domicile /Birth Certificate
8. Cast Certificate
9. Cast Validity Certificate
10. Non Creamy layer Certificate
11. Family annual income Certificate
12. Aadhar Card

**ACT's Alard College of Engineering and Management, Marunji, Pune 411057.**

Approved by AICTE, New Delhi, Affiliated to the Savitribai Phule Pune University and Recognized by DTE-Maharashtra.

**NAAC Accredited**

**Civil Engineering**

**Electronics and Telecommunication Engineering**

**Computer Engineering**

**AIML Engineering**

**Electrical Engineering**

**Mechanical Engineering**

DTE Choice Code: 6325

For Admission Contact:

9822437729,

9168656066

[www.alardinstitutes.com](http://www.alardinstitutes.com)





## Career Opportunities:

### For Computer Engineering:

Job Sector
Information Technology
Education Sector
Automotive Industry
Entertainment Industry
Retail Industry
Healthcare Sector

Job Role
Software Engineer
Software Architect
Development Operation Engineer
Full Stack Engineer
Cloud Engineer
Cyber Security Engineer

### For Civil Engineering:

Job Sector
Real Estate Sector
Infrastructure Sector
Architecture and Town planning
State Govt. PWD, WRD
Central Govt. CPWD, BRO, Railways
Private and Government Contracting
PMC

Job Role
Jr. Site Engineer
Quality and Planning Engineer
Structural Design Engineer
Estimate and billing Engineer
Survey Engineer
Entrepreneurship

**ACT's Alard College of Engineering and Management, Marunji, Pune 411057.**

Approved by AICTE, New Delhi, Affiliated to the Savitribai Phule Pune University and Recognized by DTE-Maharashtra.

**NAAC Accredited**

**Civil Engineering  
Electronics and Telecommunication Engineering**

**Computer Engineering  
AIML Engineering**

**Electrical Engineering  
Mechanical Engineering**

DTE Choice Code: 6325

For Admission Contact:

9822437729,

9168656066

[www.alardinstitutes.com](http://www.alardinstitutes.com)



## Career Opportunities:

### For Electrical Engineering:

Job Sector
Public Sector (PSU)
MSEB
Indian Railways
Aerospace Manufacture Industry
Healthcare sector
DRDO, BARC, ISRO

Job Role
Design Engineer
Production Engineer
Electrical Contractor
Navigation Engineer
Maintenance Engineer
New Product Development Engineer

### For Electronics and Telecommunication Engineering:

Job Sector
Embedded Systems
Power Electronics
Solid State Physics
Control systems
Defense
Nanotechnology
Mobile Companies

Job Role
Network Planning Engineer
Field Test Engineer.
Electronics Engineer.
System Control Engineer
Field Test Engineer
Research and Development Software Engineer

**ACT's Alard College of Engineering and Management, Marunji, Pune 411057.**

Approved by AICTE, New Delhi, Affiliated to the Savitribai Phule Pune University and Recognized by DTE-Maharashtra.

**NAAC Accredited**

**Civil Engineering  
Electronics and Telecommunication Engineering**

**Computer Engineering  
AIML Engineering**

**Electrical Engineering  
Mechanical Engineering**

DTE Choice Code: 6325

For Admission Contact:

9822437729,

9168656066

[www.alardinstitutes.com](http://www.alardinstitutes.com)



## Career Opportunities:

### For Mechanical Engineering:

Job Sector
Mechanical component industries
Automotive industries Sector
Locomotive industries
Defense sector Space
Navratna government companies
Aeronautical engineering sector

Job Role
Design engineer
Industrial engineer
Power plant engineer
Maintenance engineer
Senior core design engineer
Executive engineering

### For AI & ML Engineering:

Job Sector
Military Field
Medical Diagnosis
Civil & Public Security
Defense sector Space
Smart Robot
Telecommunications Industry

Job Role
Autonomous Vehicle Infrastructure Designer
Algorithm Trainers / Click Workers
AI Cyber security Expert
Robot Personality Designer
Robot Obedience Trainer

**ACT's Alard College of Engineering and Management, Marunji, Pune 411057.**

Approved by AICTE, New Delhi, Affiliated to the Savitribai Phule Pune University and Recognized by DTE-Maharashtra.

**NAAC Accredited**

**Civil Engineering  
Electronics and Telecommunication Engineering**

**Computer Engineering  
AIML Engineering**

**Electrical Engineering  
Mechanical Engineering**

DTE Choice Code: 6325

For Admission Contact:

9822437729,

9168656066

[www.alardinstitutes.com](http://www.alardinstitutes.com)





## **Key Features:**

- 1. Kotler 2020 Award for Best Engineering College**
- 2. NAAC Accredited**
- 3. Well Qualified and Experience Faculties**
- 4. Good Industry Academia Interaction**
- 5. Well Equipped Laboratories**
- 6. Wi-Fi Campus**
- 7. Well Resourced Library**
- 8. Summer Internship Every Year**
- 9. Certificate in Digital Marketing**
- 10. 25+ Value Added Courses**
- 11. Sports Academy Membership**
- 12. Six Months Paid Training**
- 13. 15000 Plus Alumni**
- 14. 15 Acre Campus**
- 15. Separate Hostel for Girls and Boys**

**ACT's Alard College of Engineering and Management, Marunji, Pune 411057.**

Approved by AICTE, New Delhi, Affiliated to the Savitribai Phule Pune University and Recognized by DTE-Maharashtra.

**NAAC Accredited**

**Civil Engineering**

**Electronics and Telecommunication Engineering**

**Computer Engineering**

**AIML Engineering**

**Electrical Engineering**

**Mechanical Engineering**

DTE Choice Code: 6325

For Admission Contact:

9822437729,

9168656066

[www.alardinstitutes.com](http://www.alardinstitutes.com)







# Workshop

# Guest Lecture

**ACT's Alard College of Engineering and Management, Marunji, Pune 411057.**

Approved by AICTE, New Delhi, Affiliated to the Savitribai Phule Pune University and Recognized by DTE-Maharashtra.

**NAAC Accredited**

**Civil Engineering  
Electronics and Telecommunication Engineering**

**Computer Engineering  
AIML Engineering**

**Electrical Engineering  
Mechanical Engineering**

DTE Choice Code: 6325

For Admission Contact:

9822437729,

9168656066

[www.alardinstitutes.com](http://www.alardinstitutes.com)











## WORKSHOPS & SEMINARS



## Guest lectures

**ACT's Alard College of Engineering and Management, Marunji, Pune 411057.**  
 Approved by AICTE, New Delhi, Affiliated to the Savitribai Phule Pune University and Recognized by DTE-Maharashtra.

**NAAC Accredited**

**Civil Engineering  
 Electronics and Telecommunication Engineering**

**Computer Engineering  
 AIML Engineering**

**Electrical Engineering  
 Mechanical Engineering**

DTE Choice Code: 6325  
 For Admission Contact:  
 9822437729,  
 9168656066  
[www.alardinstitutes.com](http://www.alardinstitutes.com)







**ACT's Alard College of Engineering and Management, Marunji, Pune 411057.**

Approved by AICTE, New Delhi, Affiliated to the Savitribai Phule Pune University and Recognized by DTE-Maharashtra.

**NAAC Accredited**

**Civil Engineering**

**Electronics and Telecommunication Engineering**

**Computer Engineering**

**AIML Engineering**

**Electrical Engineering**

**Mechanical Engineering**

DTE Choice Code: 6325

For Admission Contact:

9822437729,

9168656066

[www.alardinstitutes.com](http://www.alardinstitutes.com)







**ACT's Alard College of Engineering and Management, Marunji, Pune 411057.**

Approved by AICTE, New Delhi, Affiliated to the Savitribai Phule Pune University and Recognized by DTE-Maharashtra.

**NAAC Accredited**

**Civil Engineering**

**Electronics and Telecommunication Engineering**

**Computer Engineering**

**AIML Engineering**

**Electrical Engineering**

**Mechanical Engineering**

DTE Choice Code: 6325

For Admission Contact:

9822437729,

9168656066

[www.alardinstitutes.com](http://www.alardinstitutes.com)







**ACT's Alard College of Engineering and Management, Marunji, Pune 411057.**

Approved by AICTE, New Delhi, Affiliated to the Savitribai Phule Pune University and Recognized by DTE-Maharashtra.

**NAAC Accredited**

**Civil Engineering  
Electronics and Telecommunication Engineering**

**Computer Engineering  
AIML Engineering**

**Electrical Engineering  
Mechanical Engineering**

DTE Choice Code: 6325

For Admission Contact:

9822437729,

9168656066

[www.alardinstitutes.com](http://www.alardinstitutes.com)







## Social activities



## Social Activity

**ACT's Alard College of Engineering and Management, Marunji, Pune 411057.**

Approved by AICTE, New Delhi, Affiliated to the Savitribai Phule Pune University and Recognized by DTE-Maharashtra.

**NAAC Accredited**

**Civil Engineering  
Electronics and Telecommunication Engineering**

**Computer Engineering  
AIML Engineering**

**Electrical Engineering  
Mechanical Engineering**

DTE Choice Code: 6325

For Admission Contact:

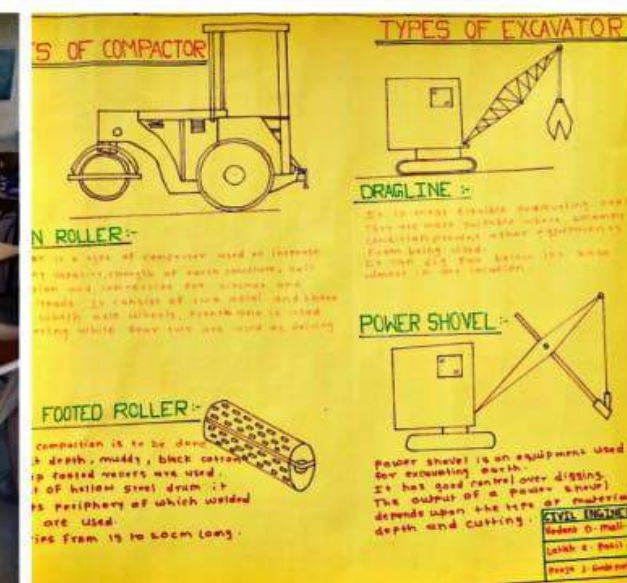
9822437729,

9168656066

[www.alardinstitutes.com](http://www.alardinstitutes.com)











**ACT's Alard College of Engineering and Management, Marunji, Pune 411057.**

Approved by AICTE, New Delhi, Affiliated to the Savitribai Phule Pune University and Recognized by DTE-Maharashtra.

**NAAC Accredited**

**Civil Engineering  
Electronics and Telecommunication Engineering**

**Computer Engineering  
AIML Engineering**

**Electrical Engineering  
Mechanical Engineering**

DTE Choice Code: 6325

For Admission Contact:

9822437729,

9168656066

[www.alardinstitutes.com](http://www.alardinstitutes.com)







# Social Activity

## SOCIAL ACTIVITIES



**ACT's Alard College of Engineering and Management, Marunji, Pune 411057.**

Approved by AICTE, New Delhi, Affiliated to the Savitribai Phule Pune University and Recognized by DTE-Maharashtra.

**NAAC Accredited**

**Civil Engineering**

**Electronics and Telecommunication Engineering**

**Computer Engineering**

**AIML Engineering**

**Electrical Engineering**

**Mechanical Engineering**

DTE Choice Code: 6325

For Admission Contact:

9822437729,

9168656066

[www.alardinstitutes.com](http://www.alardinstitutes.com)







## Social Activity



**ACT's Alard College of Engineering and Management, Marunji, Pune 411057.**

Approved by AICTE, New Delhi, Affiliated to the Savitribai Phule Pune University and Recognized by DTE-Maharashtra.

**NAAC Accredited**

**Civil Engineering  
Electronics and Telecommunication Engineering**

**Computer Engineering  
AIML Engineering**

**Electrical Engineering  
Mechanical Engineering**

DTE Choice Code: 6325

For Admission Contact:

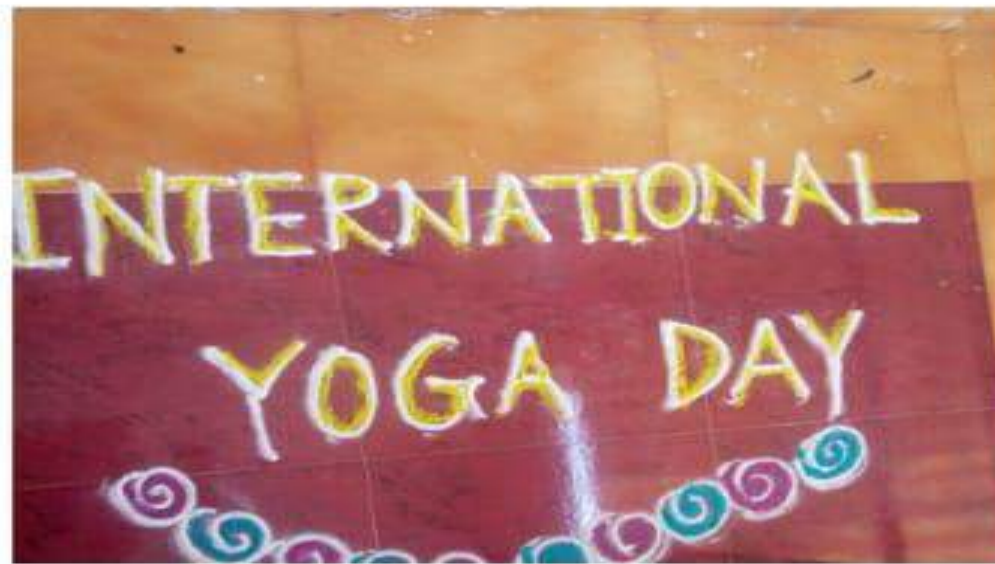
9822437729,

9168656066

[www.alardinstitutes.com](http://www.alardinstitutes.com)







**ACT's Alard College of Engineering and Management, Marunji, Pune 411057.**

Approved by AICTE, New Delhi, Affiliated to the Savitribai Phule Pune University and Recognized by DTE-Maharashtra.

**NAAC Accredited**

**Civil Engineering**

**Electronics and Telecommunication Engineering**

**Computer Engineering**

**AIML Engineering**

**Electrical Engineering**

**Mechanical Engineering**

DTE Choice Code: 6325

For Admission Contact:

9822437729,

9168656066

[www.alardinstitutes.com](http://www.alardinstitutes.com)







2020/2/20 16:23

**ACT's Alard College of Engineering and Management, Marunji, Pune 411057.**

Approved by AICTE, New Delhi, Affiliated to the Savitribai Phule Pune University and Recognized by DTE-Maharashtra.

**NAAC Accredited**

**Civil Engineering**

**Electronics and Telecommunication Engineering**

**Computer Engineering**

**AIML Engineering**

**Electrical Engineering**

**Mechanical Engineering**

DTE Choice Code: 6325

For Admission Contact:

9822437729,

9168656066

[www.alardinstitutes.com](http://www.alardinstitutes.com)







**ACT's Alard College of Engineering and Management, Marunji, Pune 411057.**

Approved by AICTE, New Delhi, Affiliated to the Savitribai Phule Pune University and Recognized by DTE-Maharashtra.

**NAAC Accredited**

**Civil Engineering**

**Electronics and Telecommunication Engineering**

**Computer Engineering**

**AIML Engineering**

**Electrical Engineering**

**Mechanical Engineering**

DTE Choice Code: 6325

For Admission Contact:

9822437729,

9168656066

[www.alardinstitutes.com](http://www.alardinstitutes.com)







# *Induction Program*

**ACT's Alard College of Engineering and Management, Marunji, Pune 411057.**

Approved by AICTE, New Delhi, Affiliated to the Savitribai Phule Pune University and Recognized by DTE-Maharashtra.

**NAAC Accredited**

**Civil Engineering  
Electronics and Telecommunication Engineering**

**Computer Engineering  
AIML Engineering**

**Electrical Engineering  
Mechanical Engineering**

DTE Choice Code: 6325

For Admission Contact:

9822437729,

9168656066

[www.alardinstitutes.com](http://www.alardinstitutes.com)







## SPORTS



**ACT's Alard College of Engineering and Management, Marunji, Pune 411057.**

Approved by AICTE, New Delhi, Affiliated to the Savitribai Phule Pune University and Recognized by DTE-Maharashtra.

**NAAC Accredited**

**Civil Engineering**

**Electronics and Telecommunication Engineering**

**Computer Engineering**

**AIML Engineering**

**Electrical Engineering**

**Mechanical Engineering**

DTE Choice Code: 6325

For Admission Contact:

9822437729,

9168656066

[www.alardinstitutes.com](http://www.alardinstitutes.com)







**Programming Laboratory Lab**



**Database Management Lab**

**ACT's Alard College of Engineering and Management, Marunji, Pune 411057.**

Approved by AICTE, New Delhi, Affiliated to the Savitribai Phule Pune University and Recognized by DTE-Maharashtra.

**NAAC Accredited**

**Civil Engineering**

**Electronics and Telecommunication Engineering**

**Computer Engineering**

**AIML Engineering**

**Electrical Engineering**

**Mechanical Engineering**

DTE Choice Code: 6325

For Admission Contact:

9822437729,

9168656066

[www.alardinstitutes.com](http://www.alardinstitutes.com)







**Networking Lab**



**Operating Systems Lab**

**ACT's Alard College of Engineering and Management, Marunji, Pune 411057.**

Approved by AICTE, New Delhi, Affiliated to the Savitribai Phule Pune University and Recognized by DTE-Maharashtra.

**NAAC Accredited**

**Civil Engineering  
Electronics and Telecommunication Engineering**

**Computer Engineering  
AIML Engineering**

**Electrical Engineering  
Mechanical Engineering**

DTE Choice Code: 6325

For Admission Contact:

9822437729,

9168656066

[www.alardinstitutes.com](http://www.alardinstitutes.com)







**Electrical Machine-ii Lab**



**Power System Lab**

**ACT's Alard College of Engineering and Management, Marunji, Pune 411057.**

Approved by AICTE, New Delhi, Affiliated to the Savitribai Phule Pune University and Recognized by DTE-Maharashtra.

**NAAC Accredited**

**Civil Engineering  
Electronics and Telecommunication Engineering**

**Computer Engineering  
AIML Engineering**

**Electrical Engineering  
Mechanical Engineering**

DTE Choice Code: 6325

For Admission Contact:

9822437729,

9168656066

[www.alardinstitutes.com](http://www.alardinstitutes.com)







Hostel

**ACT's Alard College of Engineering and Management, Marunji, Pune 411057.**

Approved by AICTE, New Delhi, Affiliated to the Savitribai Phule Pune University and Recognized by DTE-Maharashtra.

**NAAC Accredited**

**Civil Engineering  
Electronics and Telecommunication Engineering**

**Computer Engineering  
AIML Engineering**

**Electrical Engineering  
Mechanical Engineering**

DTE Choice Code: 6325

For Admission Contact:

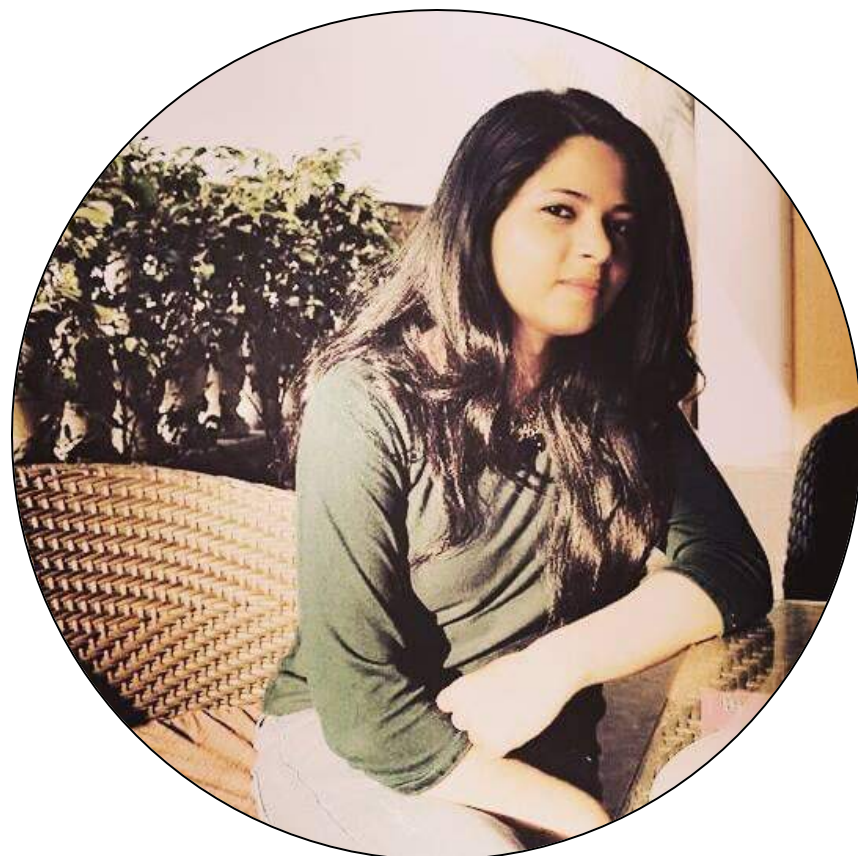
9822437729,

9168656066

[www.alardinstitutes.com](http://www.alardinstitutes.com)







Sakshi Das  
Computer Engineering  
Pursuing MBA (BITS PILANI)

The idea of being in a new place with new people none of which I knew before scared me. This experience turned out to be the complete opposite of what I had envisioned during the weeks leading up to this anxiety-filled affair. Being part of ACEM made my life easy. Staff and Teachers helped me not only with my studies but also my social life. I am looking for the very best part of my life with ACEM.



Aishwarya Sahay  
Electronics and Telecommunication Engineering  
Tata Consultancy Services

“Thank you ACEM”  
To the faculty and staff members, thank you all for being so helpful and supportive throughout this placements and academics. I really had a fantastic time and learnt so much along the way. Thank you so much.

**ACT's Alard College of Engineering and Management, Marunji, Pune 411057.**  
Approved by AICTE, New Delhi, Affiliated to the Savitribai Phule Pune University and Recognized by DTE-Maharashtra.

**NAAC Accredited**

**Civil Engineering  
Electronics and Telecommunication Engineering**

**Computer Engineering  
AIML Engineering**

**Electrical Engineering  
Mechanical Engineering**

DTE Choice Code: 6325  
For Admission Contact:  
9822437729,  
9168656066  
[www.alardinstitutes.com](http://www.alardinstitutes.com)







**Deepali Patil**  
Electrical Engineering  
Media Marketing Manager at MPTA

In addition to broadening my perspective , it has helped me to grow both professionally and personally. I have become more confident and learnt to face challenges head on with creative approaches and turn them into opportunities.



**Shraddha Yetuskar**  
Electronics and Telecommunication Engineering  
Wipro

I was prepared for the future.  
Thanks to the incredible professors and peers supporting me to enrich my skills set to fight and will over.



**Ajit Magar**  
Electrical Engineering  
Electro Technical Officer Merchant Navy

“Wonderful Experience”  
One of the best decision of my life to get admission in ACEM.. Thank you ACEM. You changed my life.

**ACT's Alard College of Engineering and Management, Marunji, Pune 411057.**

Approved by AICTE, New Delhi, Affiliated to the Savitribai Phule Pune University and Recognized by DTE-Maharashtra.

**NAAC Accredited**

**Civil Engineering**  
**Electronics and Telecommunication Engineering**

**Computer Engineering**  
**AIML Engineering**

**Electrical Engineering**  
**Mechanical Engineering**

DTE Choice Code: 6325

For Admission Contact:

9822437729,

9168656066

[www.alardinstitutes.com](http://www.alardinstitutes.com)







Roshan Barade  
Civil Engineering  
Director, SRB Construction



Nikita Sharma  
Electrical Engineering  
MS Data Science- USA

“College life is that part of your life that you are going to relive in your memories till you breathe” I Rohan, Alumni OF ACEM , under the Department of Civil Engineering, one of the best example of providing industry oriented education and training. Teachers “with huge experience will make you knowledge hunger and self-learners. They will put you on to the right track making us to understand strengths and weaknesses, trying to convert our weakness to strength. They are user friendly, principled and also they are caring.

Prominent personalities for guest lectures & Real World Managers frequent visit the batches to share their insights. The college prepares the students to face the real world with confidence.

**ACT's Alard College of Engineering and Management, Marunji, Pune 411057.**

Approved by AICTE, New Delhi, Affiliated to the Savitribai Phule Pune University and Recognized by DTE-Maharashtra.

**NAAC Accredited**

**Civil Engineering  
Electronics and Telecommunication Engineering**

**Computer Engineering  
AIML Engineering**

**Electrical Engineering  
Mechanical Engineering**

DTE Choice Code: 6325

For Admission Contact:

9822437729,

9168656066

[www.alardinstitutes.com](http://www.alardinstitutes.com)







**Hardik Rampariya**  
Electrical Engineering  
Project coordinator , Ajanta Pharma Pvt. Ltd

Thanks to the College, I have now found that I am successful when undertaking assignments and organizing both myself and others. I have had huge amounts of support from both the staff and trainers who will go out of their way to help you. I have also made some good friends here who will stay with me throughout the rest of my life."



**Pragya Tiwari**  
Civil Engineering  
Reliance Infrastructure Ltd.

I was so lucky to be around such a renowned faculties who showered their love and knowledge on me. It's not only place to receive academic knowledge but an overall development of student is done.

**ACT's Alard College of Engineering and Management, Marunji, Pune 411057.**

Approved by AICTE, New Delhi, Affiliated to the Savitribai Phule Pune University and Recognized by DTE-Maharashtra.

**NAAC Accredited**

**Civil Engineering**  
**Electronics and Telecommunication Engineering**

**Computer Engineering**  
**AIML Engineering**

**Electrical Engineering**  
**Mechanical Engineering**

DTE Choice Code: 6325  
For Admission Contact:  
9822437729,  
9168656066  
[www.alardinstitutes.com](http://www.alardinstitutes.com)

